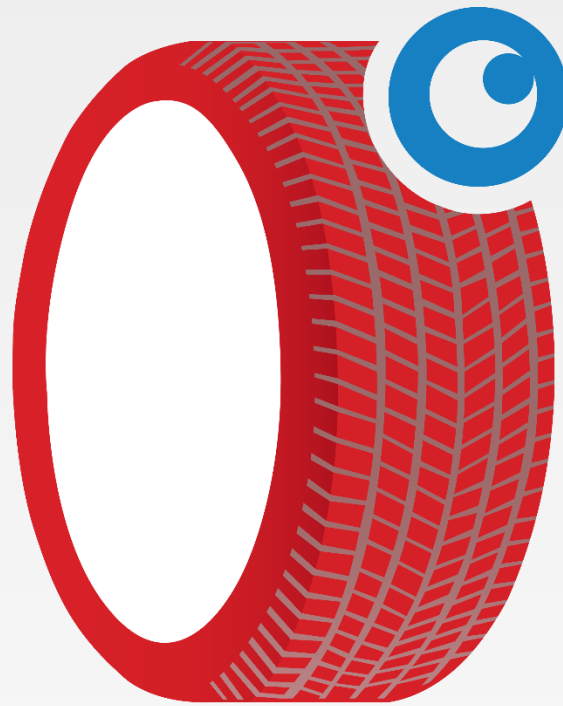
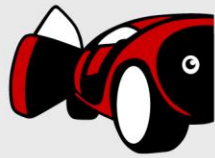


CAR-SYSTEMS B.V.  
GARAGESOFTWARE

# MindTime Backup

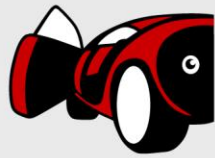




## Inhoudsopgave

1. Downloaden.....	3
1.1. Mindtime PC Backup.....	3
1.2. Mindtime PRO Backup.....	3
2. Installatie .....	4
2.1. Mindtime PC Backup.....	4
2.2. Mindtime PRO Backup.....	7
3. Instellen .....	11
3.1. Mindtime PC Backup.....	11
3.2. Mindtime PRO Backup.....	11
4. Voorkomende fouten.....	18





## 1. Downloaden

Afhankelijk van het type abonnement de klant heeft afgesloten dient 1 van de volgende versies te worden gedownload vanaf: <http://www.mindtimebackup.nl/support/downloads>

### 1.1. Mindtime PC Backup

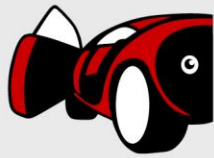
- Geen Windows Server, werkt alléén op Windows XP, Windows Vista of Windows 7 en hoger
- Maximaal 1 Werkstation
- Maximaal 1 Backupschema

➤ [Klik hier om de instructie te tonen over het installeren van deze versie](#)

### 1.2. Mindtime PRO Backup

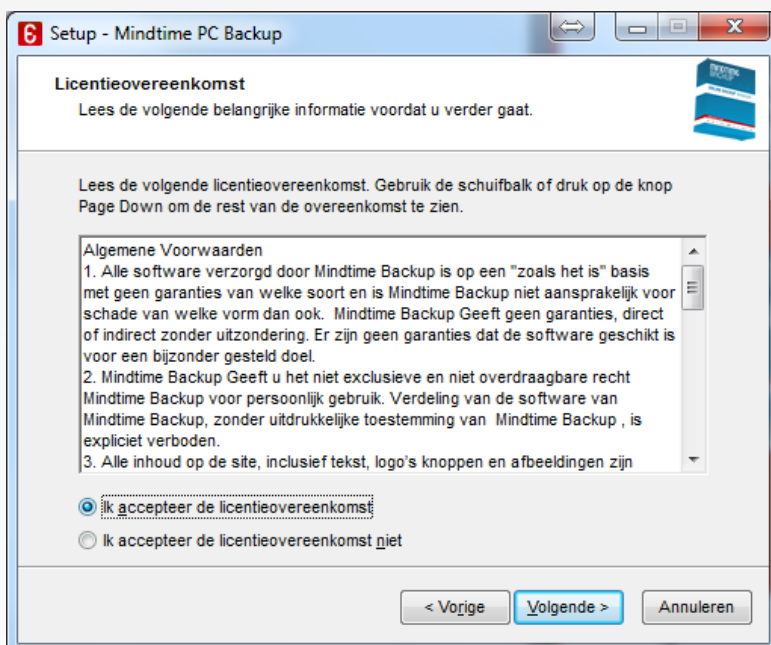
- Alle Windows versies (workstation en server)
- Onbeperkt aantal werkstations en servers
- Onbeperkt aantal backupschema's

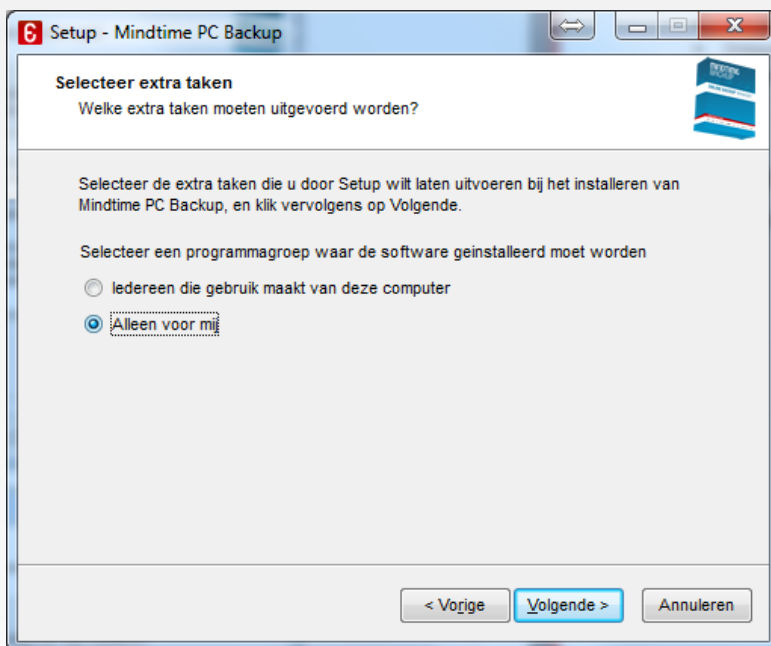
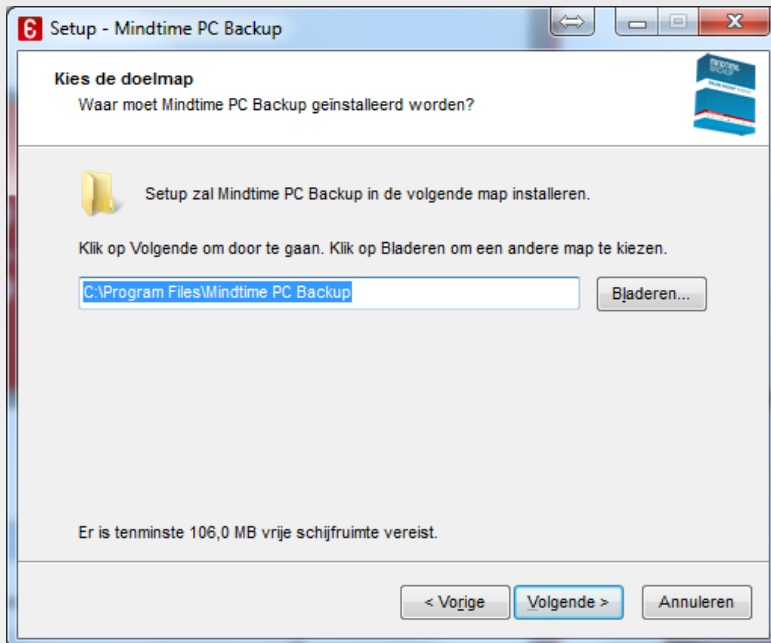
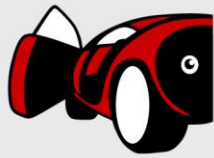
➤ [Klik hier om de instructie te tonen over het installeren van deze versie](#)



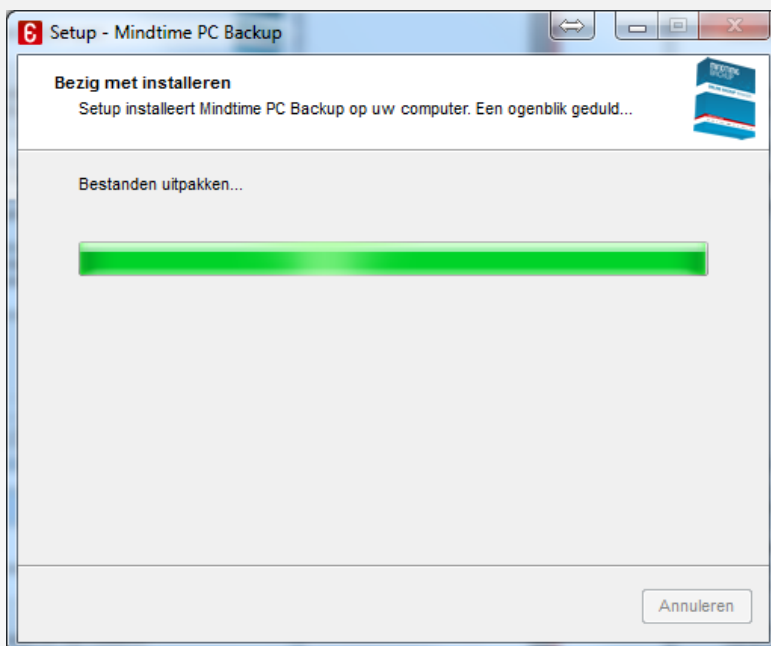
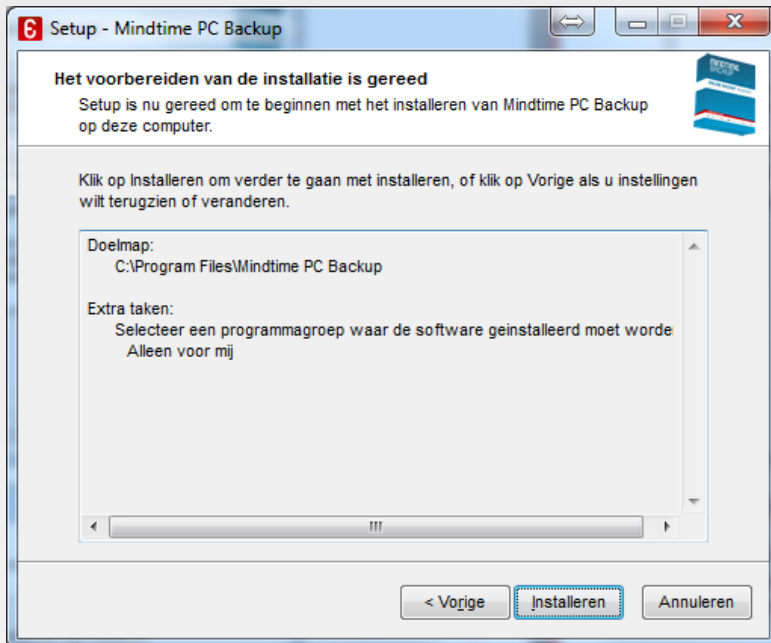
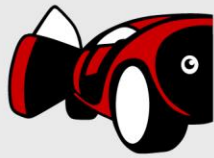
## 2. Installatie

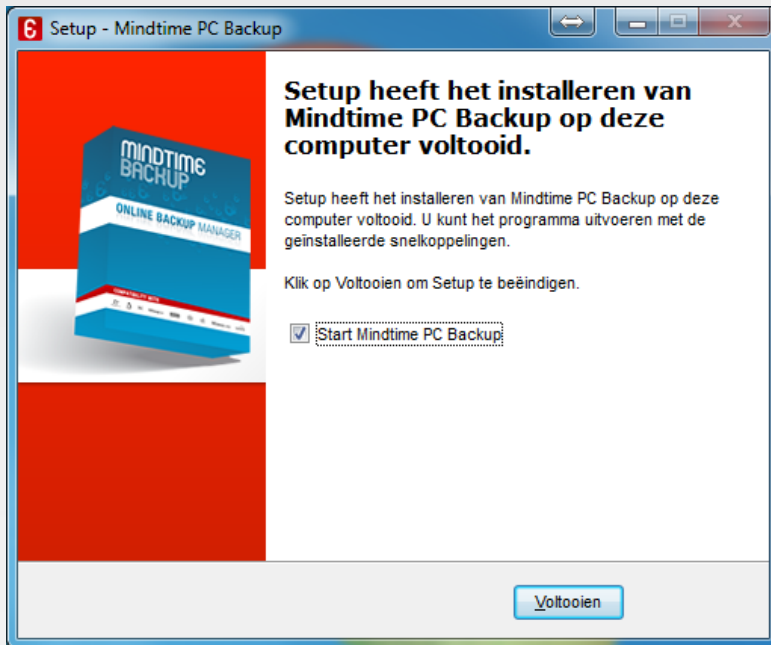
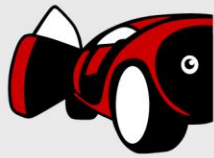
### 2.1. Mindtime PC Backup





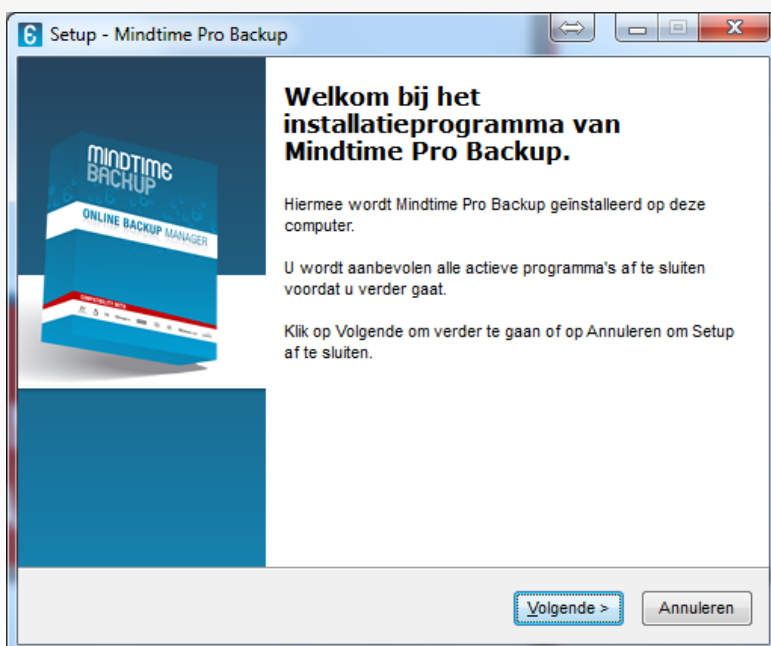
LET OP: Klik hier aan **Alleen voor mij**

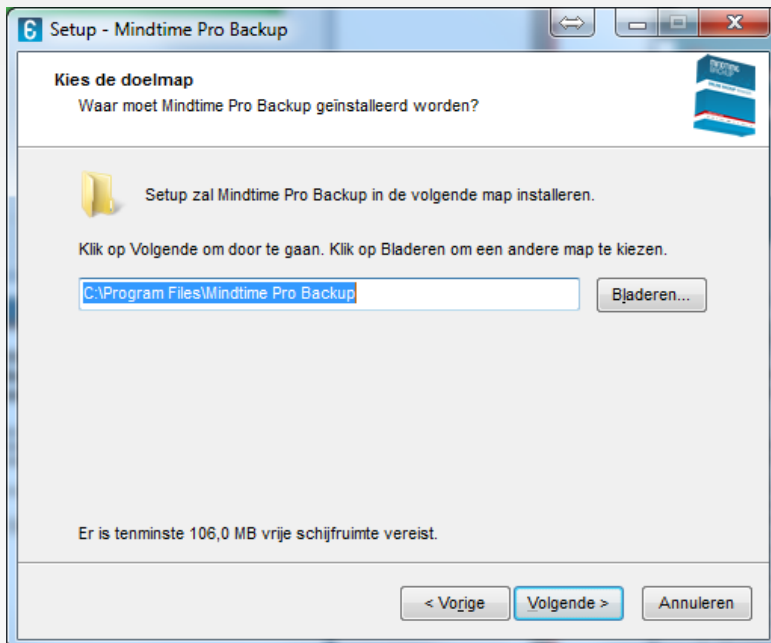
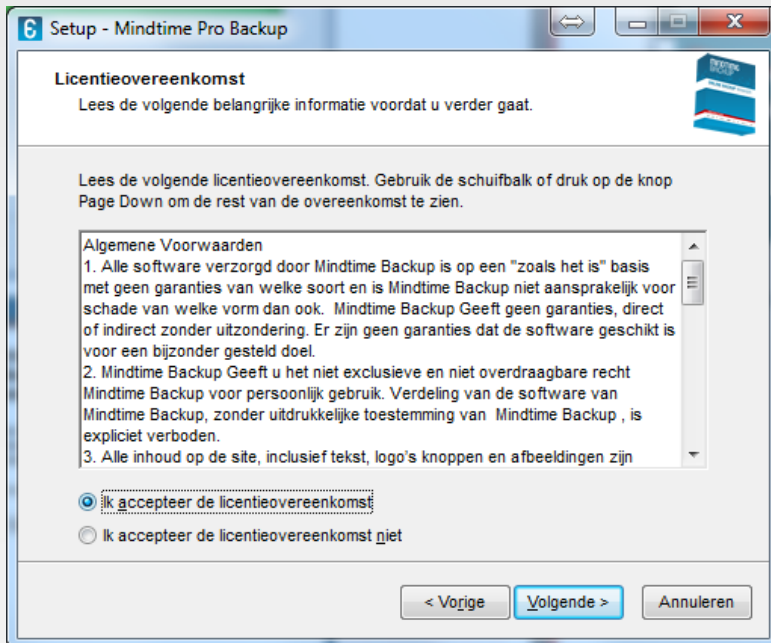
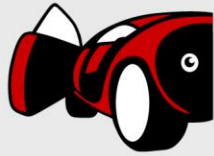




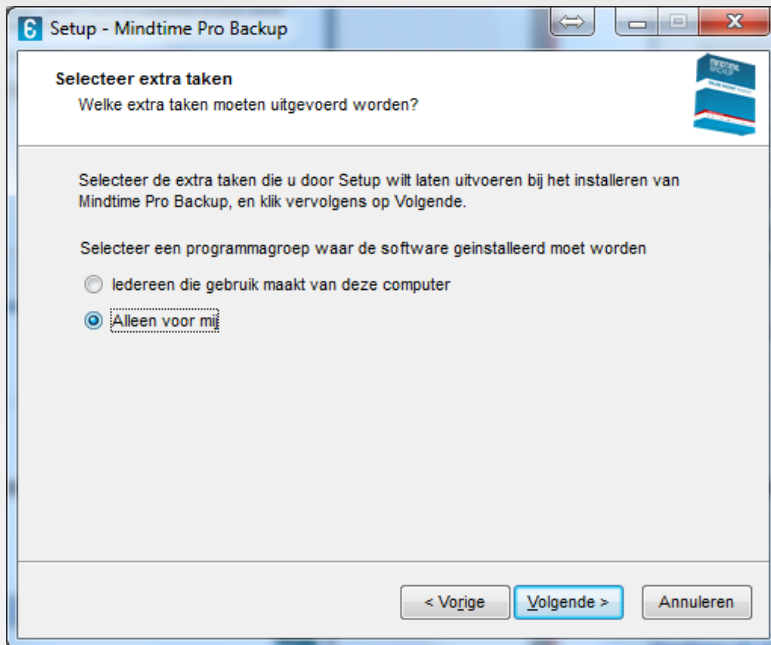
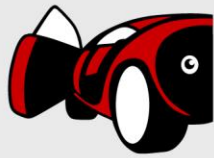
- [Klik hier om de instructie te tonen over het installeren van deze versie](#)

## 2.2. Mindtime PRO Backup

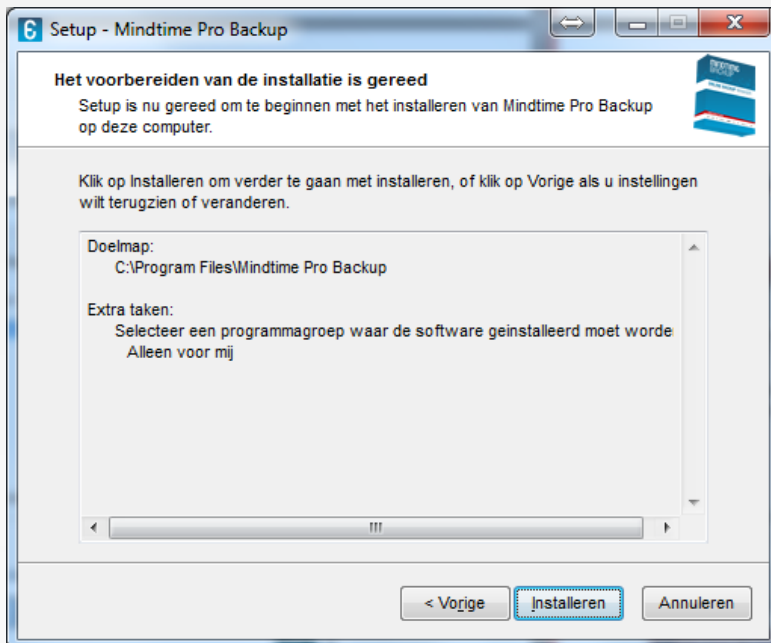


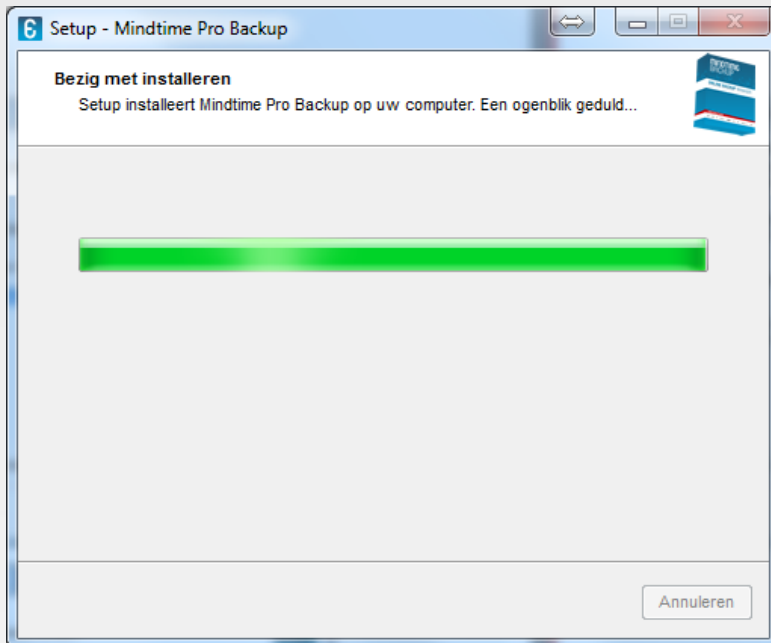
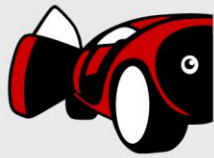




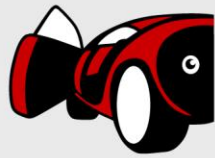


LET OP: Klik hier aan **Alleen voor mij**





- [Klik hier om naar de handleiding te gaan die gaat over het instellen](#)



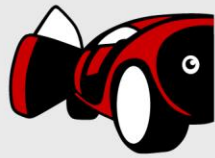
### 3. Instellen

#### 3.1. Mindtime PC Backup

The screenshot shows the 'Mindtime Backup PC Manager' window. It has a title bar with a '6' icon and window controls. The main area contains the text 'MINDTIME BACKUP Online Backup Manager' and 'PC'. Below this are two text input fields for 'Aanmeldingsnaam' and 'Wachtwoord'. There is a checked checkbox for 'Sla wachtwoord op' and a link for 'Wachtwoord vergeten?'. At the bottom are three buttons: 'OK' with a green checkmark, 'Annuleren' with a red X, and 'Opties' with a green plus sign.

#### 3.2. Mindtime PRO Backup

The screenshot shows the 'Registratie' window. The title bar has a '6' icon and window controls. The language is set to 'Nederlands'. There are two sections: 'Backup Server' with a dropdown menu showing 'http' and an empty text field; and 'Proxy-instelling' with a checkbox 'Gebruik Proxy instellingen voor de toegan...', radio buttons for 'Proxy' (selected) and 'Sock', and text fields for 'Proxyadres', 'Poort', 'Gebruikersnaam', and 'Wachtwoord'. At the bottom are two buttons: 'Volgende' with a green checkmark and 'Annuleren' with a red X.



6 Mindtime Backup Pro Manager

**MINDTIME BACKUP** Online Backup Manager

Aanmeldingsnaam :

Wachtwoord :

Sla wachtwoord op

Wachtwoord vergeten?

OK  Annuleren  Opties

Codeerinstelling

Stel de codeerinstelling van Mindtime Backup PC Manager Backuptaak in.

Codering

Standaard

Custom

Opslaan

Codeerinstelling

Stel de codeerinstelling van Mindtime Backup PC Manager Backuptaak in.

Codering

Standaard

Custom

Gebruik geen codering

Algoritme : Twofish

Modus :  ECB

CBC

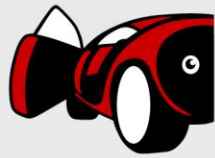
Lengte van de sleutel :  128 bits

256 bits

Sleutel coderen :

Sleutel coderen bevestigen :

Opslaan



Nieuwe backuptaak wizard

Backuptaak

Naam : Nieuwe backuptaak

Type : Bestand Backup

Volgende ▶

Nieuwe backuptaak wizard

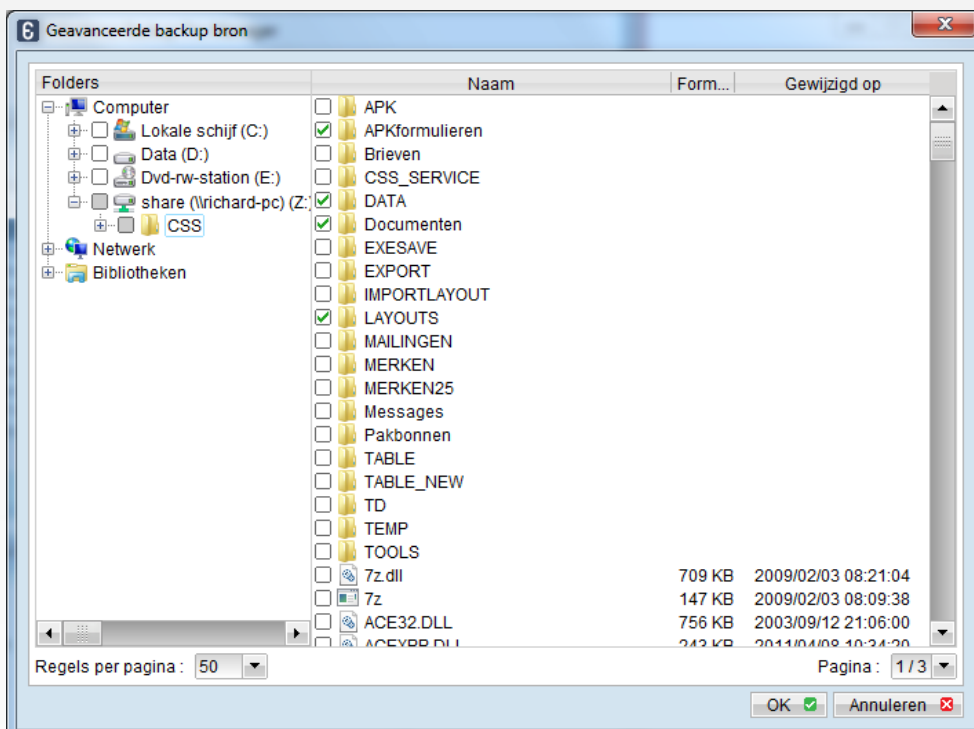
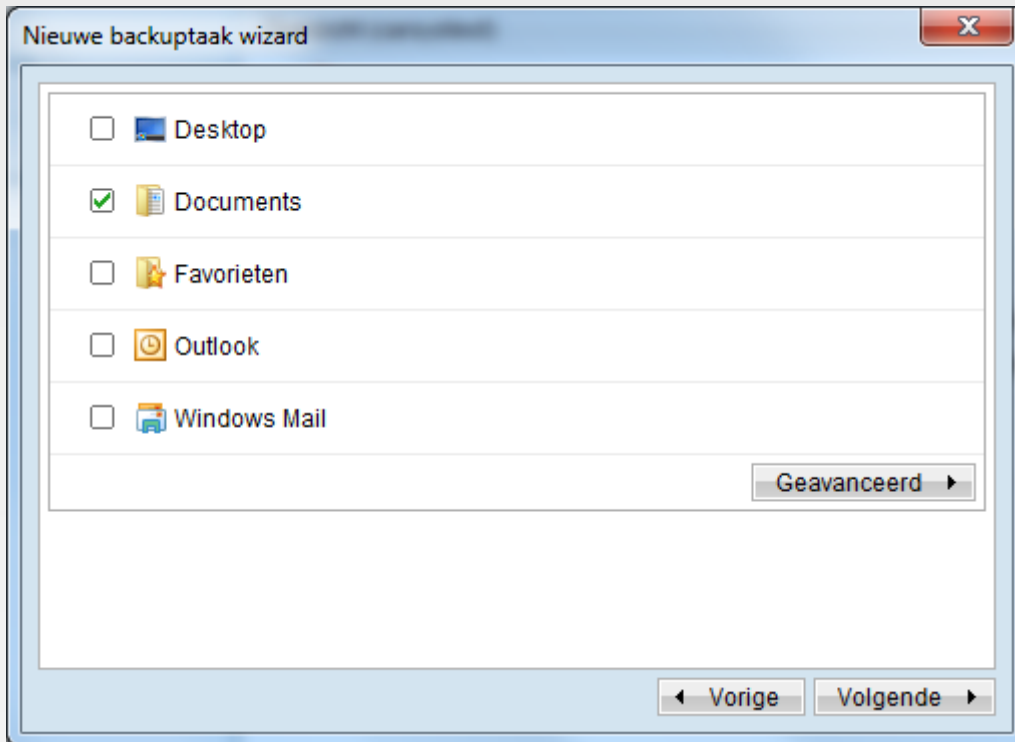
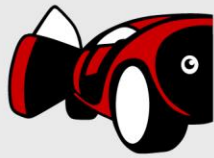
Backuptaak

Naam : Nieuwe backuptaak

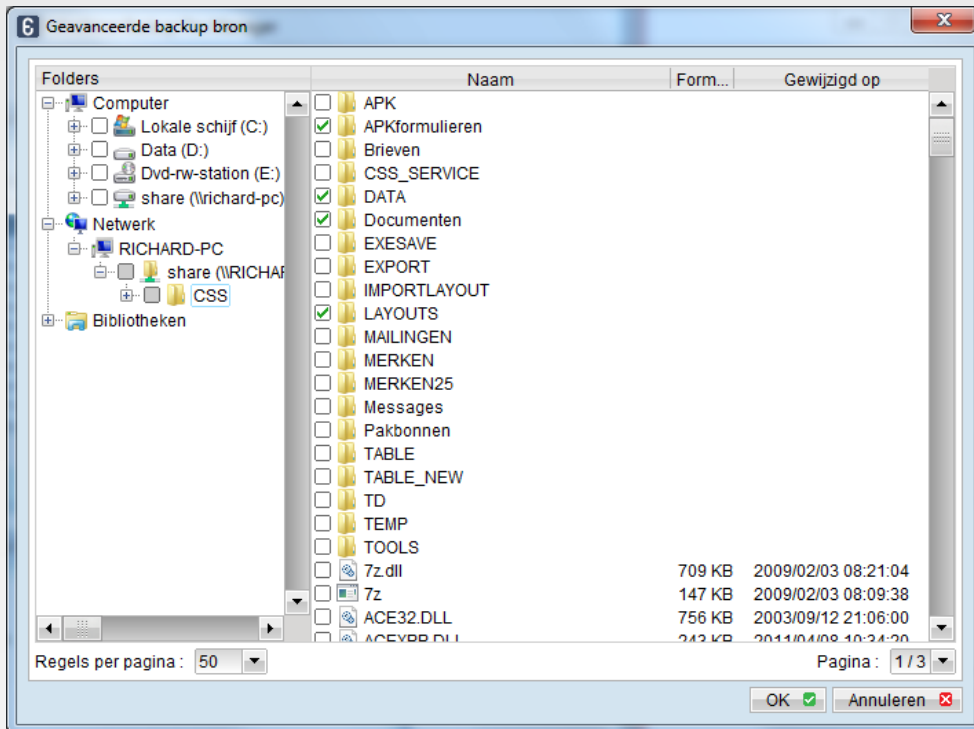
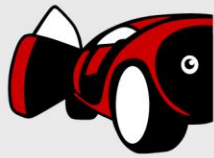
Type : Bestand Backup

- Bestand Backup
- Lotus Domino Server Backup
- Lotus Notes Client Backup
- MS Exchange Server Backup
- MS Exchange Mail Level Backup
- MS SQL Server Backup
- MySQL Backup
- Oracle Database Server Backup
- Systeemstatus Backup
- ShadowProtect System Backup
- MS Windows System Backup

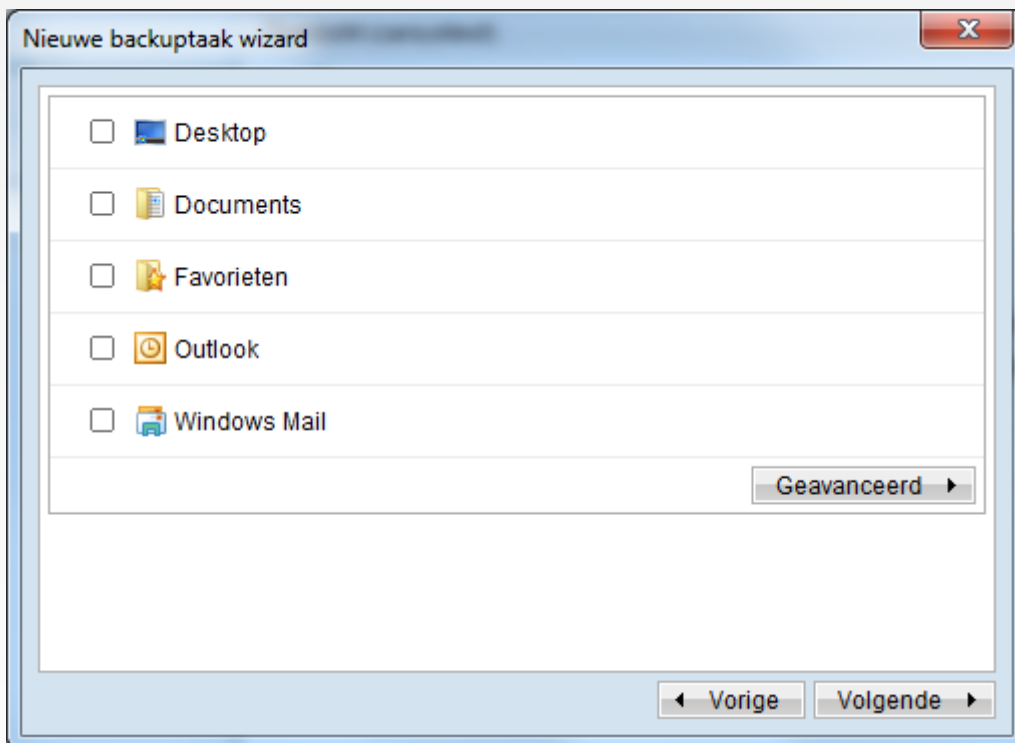
Volgende ▶

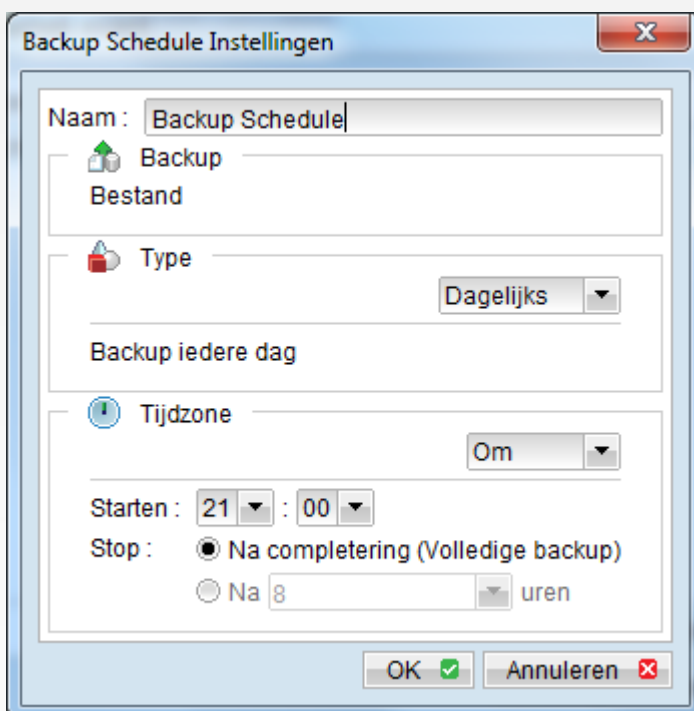
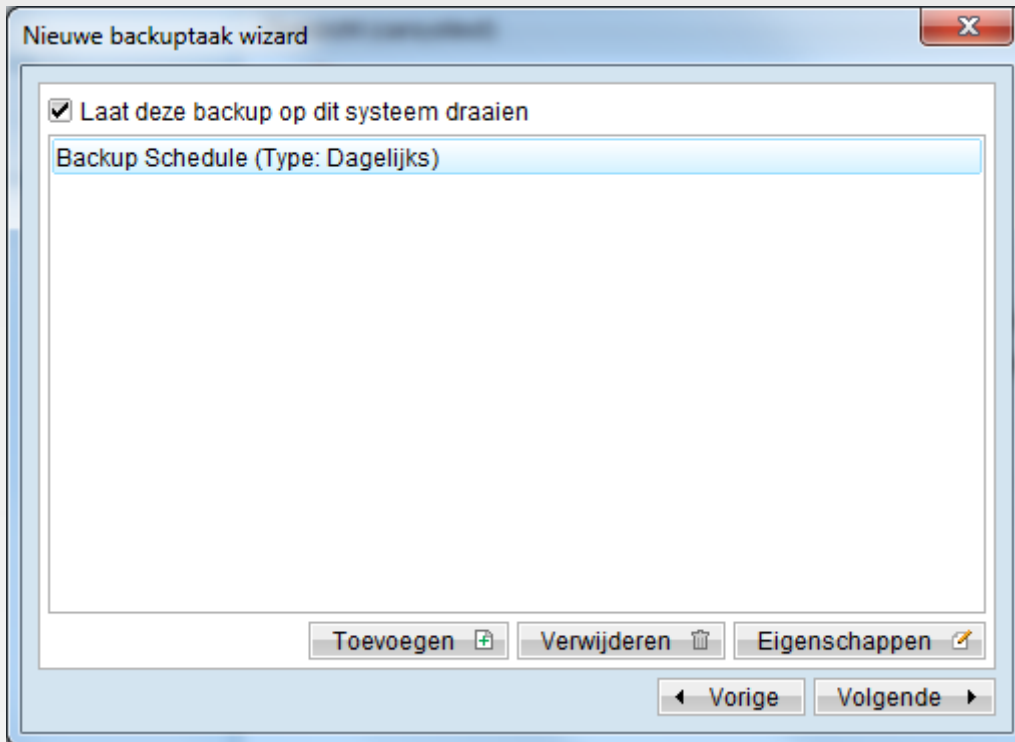
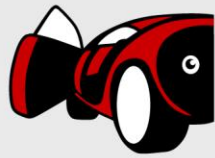


= FOUT

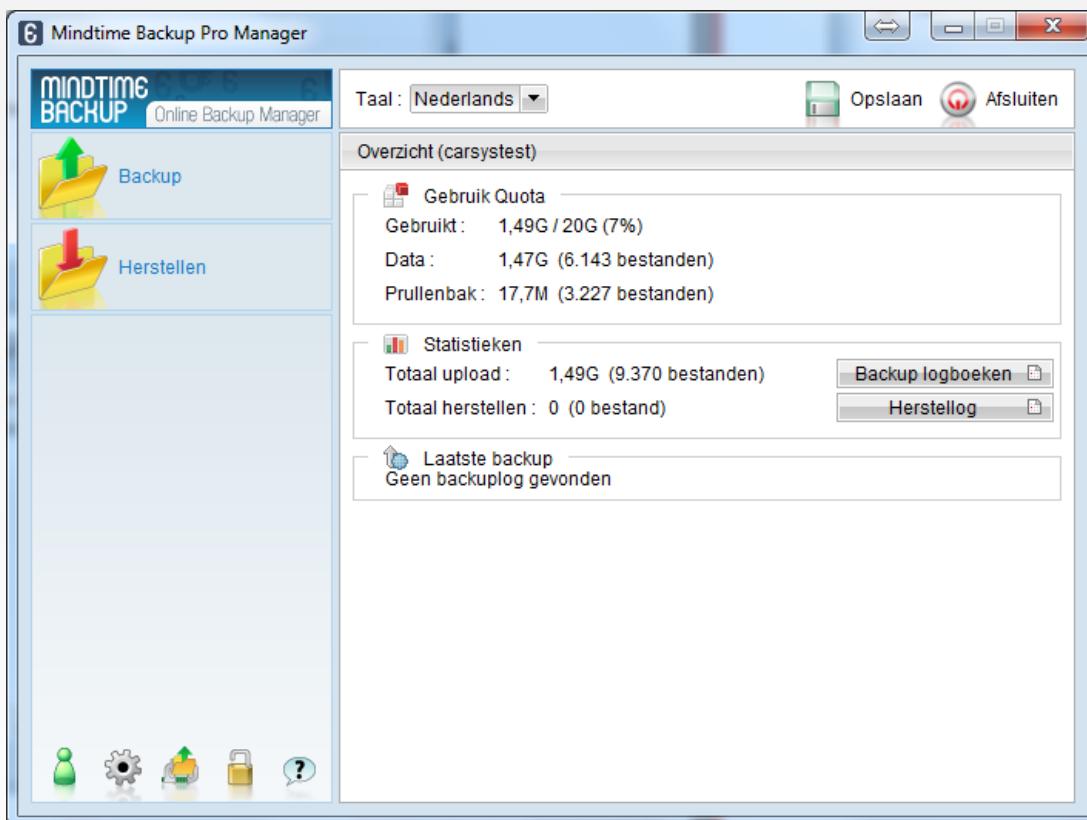
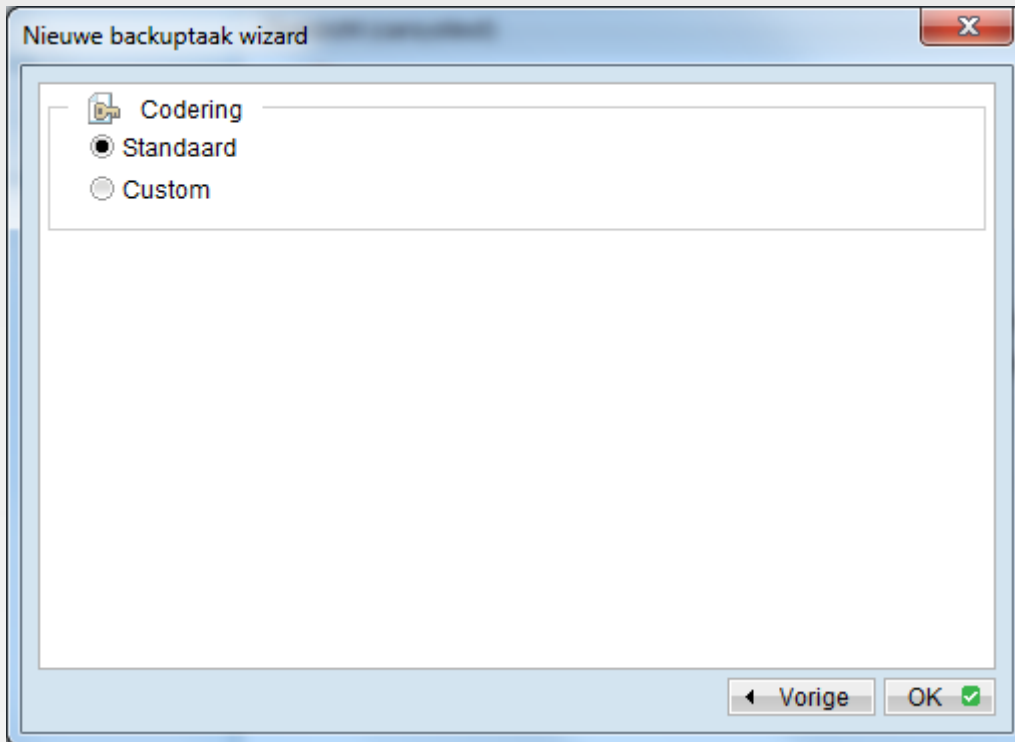
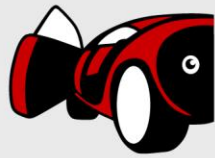


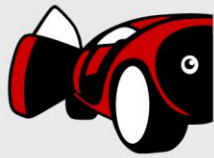
= GOED











#### 4. Voorkomende fouten

<b>Fout</b>	[BackupSetBFS.append] Unable to append data because this backup file does not exist on server (bf is null). sInBackupJob='Current' sFilename='C:\DELEN\PROG\CSS\DATA\F_ARTIKEL.CDX'(2011-09-12 17:15:35) sFileType='FT' sBackupByJob='2011-09-12-21-00-08' ISEQ='5'
<b>Oorzaak</b>	Kan geen verbinding tot stand brengen met de backup-server. Dit komt voor wanneer er op een tijdstip wordt gestart waar meerdere back-ups op gestart worden. Ter beeldvorming: 80% van alle Mindtime back-ups starten om 21:00
<b>Oplossing</b>	Probeert automatisch vanzelf. Blijft deze fout (dagelijks) terugkomen, plan de backup dan later of eerder.

<b>Fout</b>	Kan fout niet op server bijhouden. Fout="[Http.UnableToConnectExpt] [Http.SocketPack.getNewSocket] Unable to connect to sHostname='backup06.mindtime.nl' sHostIP='178.20.173.78' port='443' type='NS' sProxyHost='' sProxyPort='' sProxyUser='' sProxyPwd=''"
<b>Oorzaak</b>	Verbinding met server is niet tot stand gebracht
<b>Oplossing</b>	Probeert vanzelf opnieuw.

<b>Fout</b>	
<b>Oorzaak</b>	
<b>Oplossing</b>	

**Belangrijk:**

De inhoud van dit document dient puur ter informatie. Car-Systems kan op geen enkele manier aansprakelijk worden gesteld voor enige directe en/of indirecte schade, ontstaan door het gebruiken en/of toepassen van deze informatie.

Revisie	Wat	Datum	Door
0.1	Eerste versie	15-08-2011	Helpdesk Car-Systems
0.9	Ter inzage	19-08-2011	Helpdesk Car-Systems
1.0	Document vrijgegeven voor publiek	24-08-2011	Helpdesk Car-Systems